

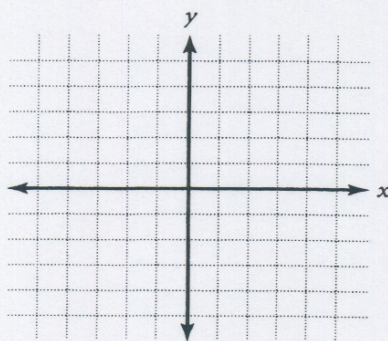


Practice

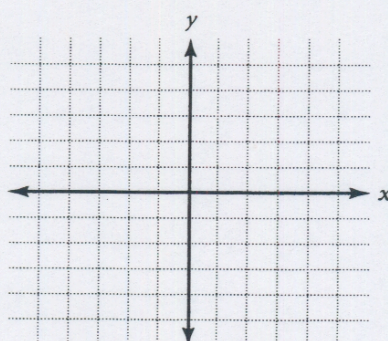
2.6 Special Functions

Graph each function.

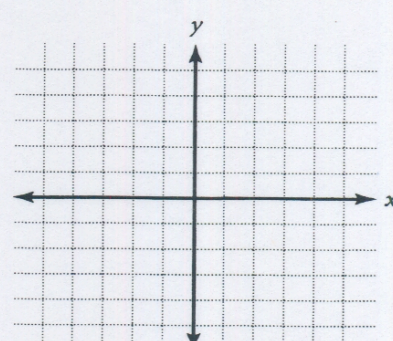
$$1. g(x) = \begin{cases} -1 - x & \text{if } x < 0 \\ x + 1 & \text{if } x \geq 0 \end{cases}$$



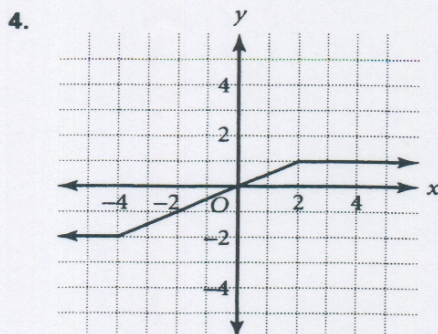
$$2. f(x) = \begin{cases} -x - 4 & \text{if } x \leq -2 \\ -x + 1 & \text{if } x > -2 \end{cases}$$

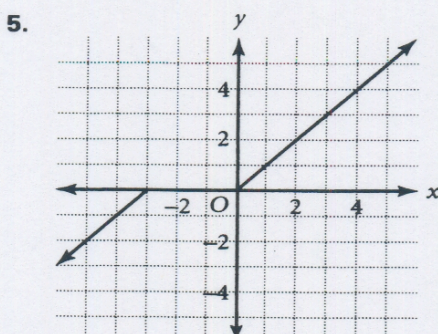


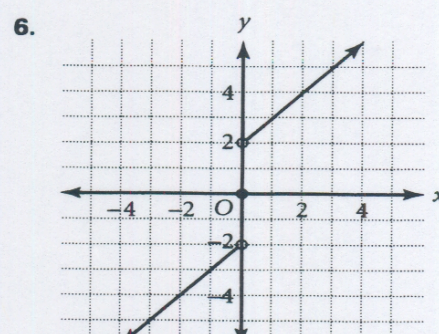
$$3. h(x) = -2[x]$$



Write the piecewise function represented by each graph.







Evaluate.

7. $\lceil -9.23 \rceil$ _____

8. $\lceil 31.7 \rceil$ _____

9. $\lceil 13.13 \rceil$ _____

10. $\lceil -0.9 \rceil$ _____

11. $\lceil 7.8 \rceil + \lceil -1.88 \rceil$ _____

12. $\lceil -2.22 \rceil - \lceil -4.5 \rceil$ _____

13. $\lceil 5.25 \rceil - \lceil -3.75 \rceil$ _____

14. $\lceil 2.5 \rceil - \lceil 2.5 \rceil$ _____

15. $-\lceil 12.95 \rceil - \lceil 6.3 \rceil$ _____

16. $-\lceil -3 \rceil - \lceil 4.9 \rceil$ _____